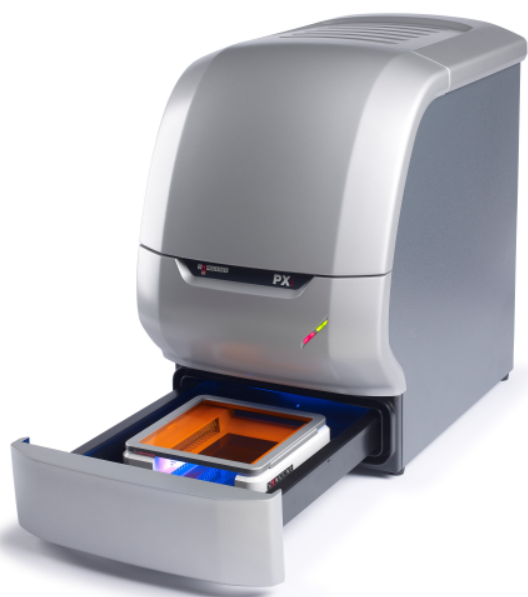


# PXi

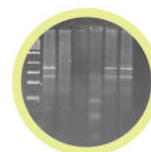
Perfection in imaging technology – the new, high resolution, multi-application imaging system

Compact and easy to use, **PXi** offers full automation in the capture of chemiluminescent and fluorescent blots, visible gels and blots and even 2D gels

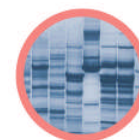


- Superior sensitivity
- Superb image quality
- Application versatility
- Fully automated
- Powered by **GeneSys**

*DNA/RNA safe stained gel*



*Coomassie blue gel*



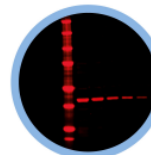
*Silver stained gel*



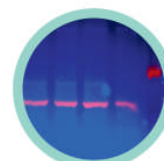
*Chemiluminescence western blots*



*IR multiplexed western blots*



*Fluorescent multiplexed blots*



## Why buy this product?

### Performance

**PXi** offers superior sensitivity that is capable of imaging a wide range of applications. Image quality is superb whether you are working with chemiluminescent blots, fluorescent blots and gels, IR gels or 2D gels. With **GeneSys** control software no other system on the market offers this level of control. If you are looking for high quality and high performance then **PXi** is your number 1 choice.



### High specification

At the heart of **PXi** is a new generation of camera – 4, 6 or 8m pixels, giving the camera outstanding sensitivity. The cameras are cooled to enable longer exposures to be used which can be a necessity for chemiluminescence and for some fluorescence applications. The superior sensitivity ensures that even faint blots or gels can be imaged with **PXi**.

### Modular

**PXi** uses a number of different lighting options including plug and play LED modules for Red, Green, Blue and IR light. This novel lighting system provides the user with the ability to perform coloured fluorescent, multiplex and colorimetric imaging. The new UltraSlim blue LED transilluminator provides you with the ideal solution for imaging 'safe dyes'.



CONTACT SYNGENE:  
EUROPE  
BEACON HOUSE  
NUFFIELD ROAD  
CAMBRIDGE  
CB4 1TF

Tel: +44 (0)1223 727123  
Fax: +44 (0)1223 727101  
Email: [sales@syngene.com](mailto:sales@syngene.com)  
Email: [support@syngene.com](mailto:support@syngene.com)

IN USA:  
5108 PEGASUS COURT, SUITE M  
FREDERICK  
MD 21704

Tel: 800 686 4407/301 662 2863  
Fax: 301 631 3977  
Email: [ussales@syngene.com](mailto:ussales@syngene.com)  
Email: [support@syngene.com](mailto:support@syngene.com)

[www.syngene.com](http://www.syngene.com)  
PXi0712